

LOCATED IN  
LODO



LINCOLN PROPERTY COMPANY

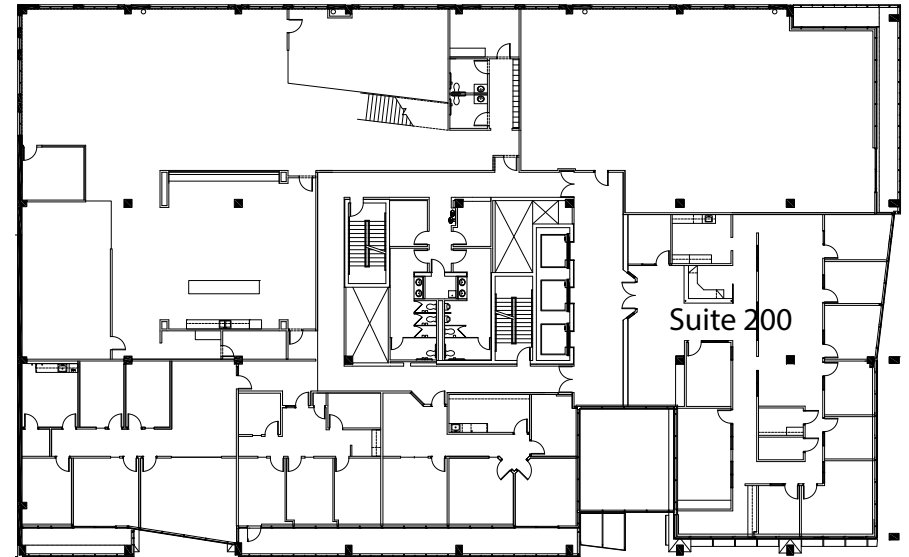
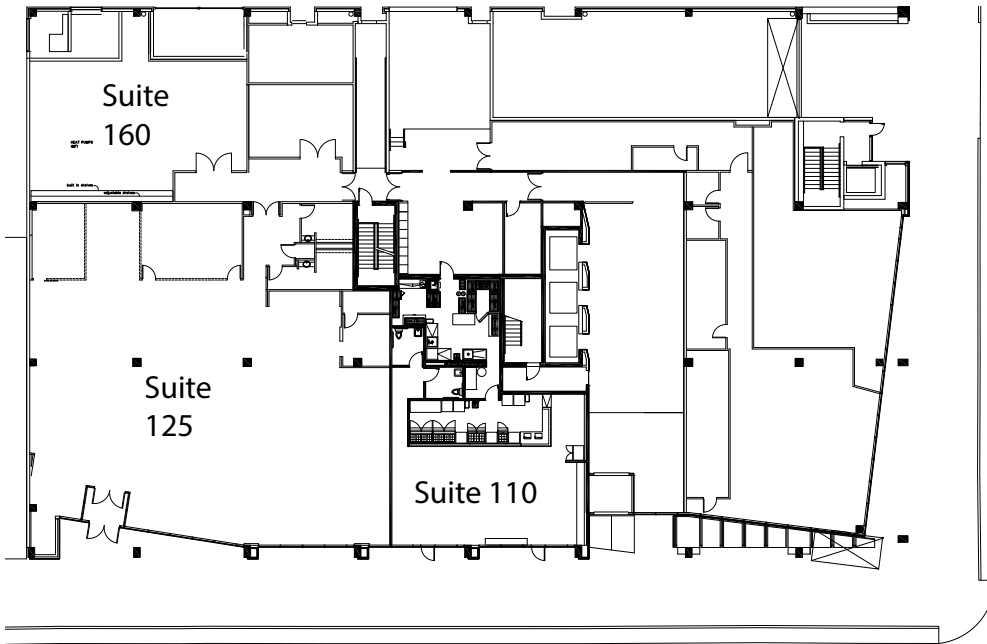
Scott Caldwell  
Senior Vice President

303.226.8205 | [scaldwell@lpc.com](mailto:scaldwell@lpc.com)

Mark Homlish  
Vice President

303.226.8207 | [mhomlish@lpc.com](mailto:mhomlish@lpc.com)

FLOOR PLANS



1ST FLOOR

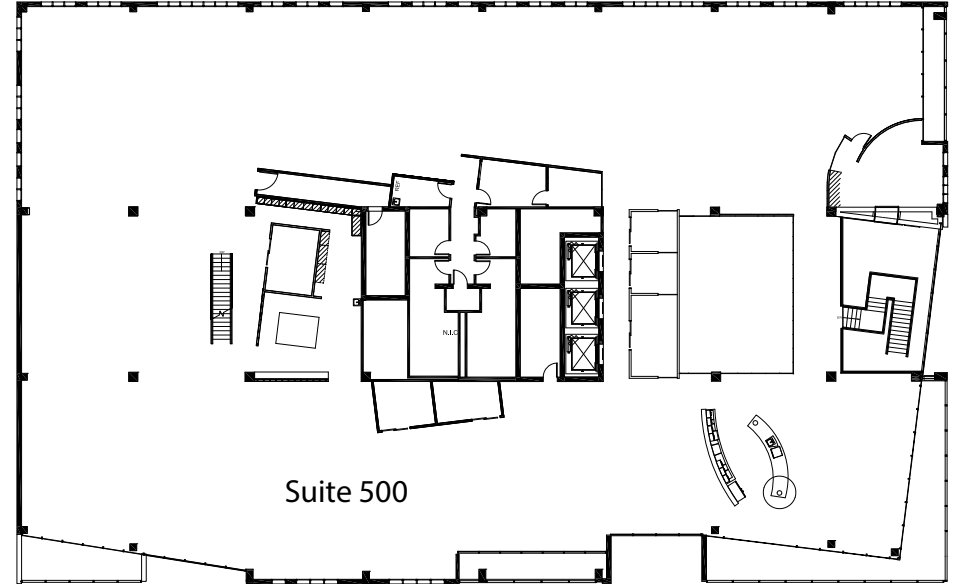
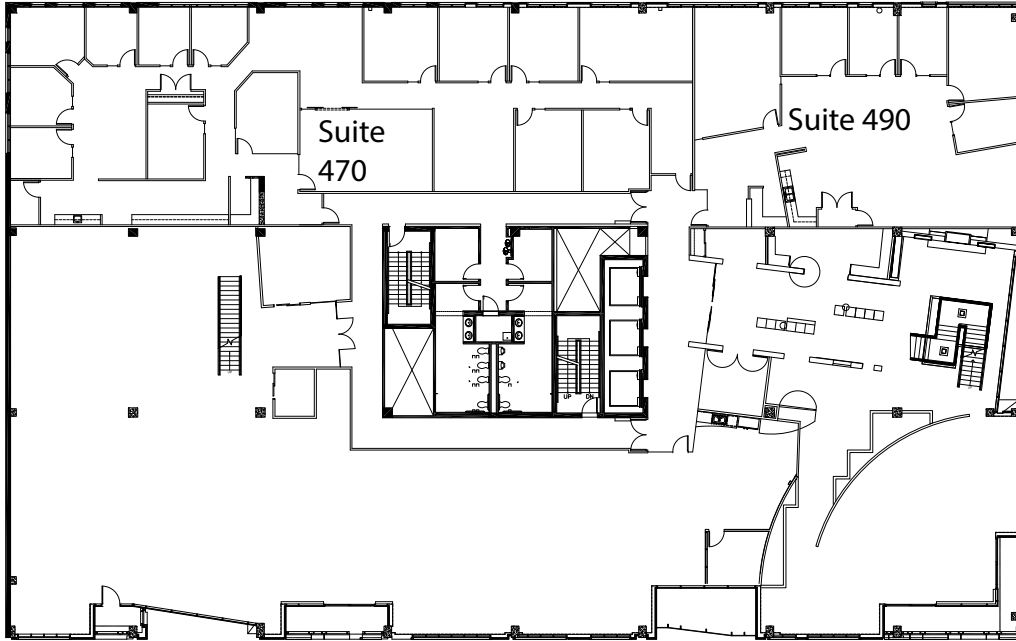
Suite #	RSF	Available
110	2,283	Oct. 2020
125	6,614	Jan. 2019
160	1,710	Now

vacant & available for Sublease

2ND FLOOR

Suite #	RSF	Available
200	4,615	Now

FLOOR PLANS



4TH FLOOR

Suite #	RSF	Available
470	6,578	Oct 2019
490	3,383	Oct 2018

5TH FLOOR

Suite #	RSF	Available
500	24,446	Jan 2019





## BUILDING INFORMATION

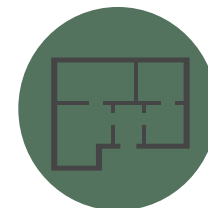
- Class A Office Building
- Year Built: 2008
- Parking Ratio: 1.3/1,000 SF
- 150 Covered Spaces @ \$200 / month
- Est. 2018 OPEX: \$19.71
- Asking Rates: \$29.00 - \$31.00/SF NNN



PRIVATE BALCONIES  
EXCLUSIVE TO USER



ON-SITE  
FITNESS CENTER



OPEN  
FLOOR PLAN



UNDERGROUND  
PARKING

PROPERTY FEATURES